

Abstract Type : Poster

Abstract Submission No. : PO-1354

A Case Report of Gramoxone inteon intoxication

Houn Jung, Hyunsuk Kim, Hoyong Jin, Kwangho Choi, Junghoon Lee, Kwangeon Sim, Jongwoo Yoon

Department of Internal Medicine, Chuncheon Sacred Heart Hospital, Korea, Republic of

Case Study:

Paraquat is a herbicide widely used in developing countries for its rapid effect and low cost. In spray form, the effects on skin and respiratory system are relatively safe compared with other herbicides, and it is widely used in agriculture. However, since it has a high mortality rate upon oral poisoning, it has been thrown out from Korea but is still used in some countries. Gramoxone inteon is a modified form of paraquat, which has been released to reduce the mortality rate caused by ingesting. It is a compound containing a seaweed extract, named alginate, which is known to inhibit absorption in the stomach upon ingestion. We report a case of a patient who has recovered by appropriate management after ingesting a significant amount of gramoxone inteon.

A 42-year-old man was admitted to the emergency room due to ingestion of 400mL of gramoxone inteon 2 hours before admission. The patient was accompanied by hypotension, tachycardia and tachypnea at the time of admission, but his consciousness was clear, while complaining of chest discomfort and dyspnea. He took Fuller's earth and was admitted to intensive care unit to undergo hemoperfusion for 3 days. At the same time, immunosuppressant (methylprednisolone 1g 3 for 3 days, cyclophosphamide 15mg/kg for 2 days) and antioxidant (N-acetylcysteine, vitamin C) treatments were maintained. After the acute phase treatment, pulmonary fibrosis progressed due to chemical damage, but it improved after immunosuppressant (cyclophosphamide, methylprednisolone) and antioxidant (glutathione, vitamin C) treatments. The patient was discharged in 40 days of admission.

This case report documented the clinical features, changes in laboratory results, and treatments of the patient who ingested a significant amount of gramoxone inteon. We hope that this report would be helpful for the medical staff who will treat patients who took gramoxone inteon in prediction of clinical progression and treatment.

Figure 1. Treatment schedule

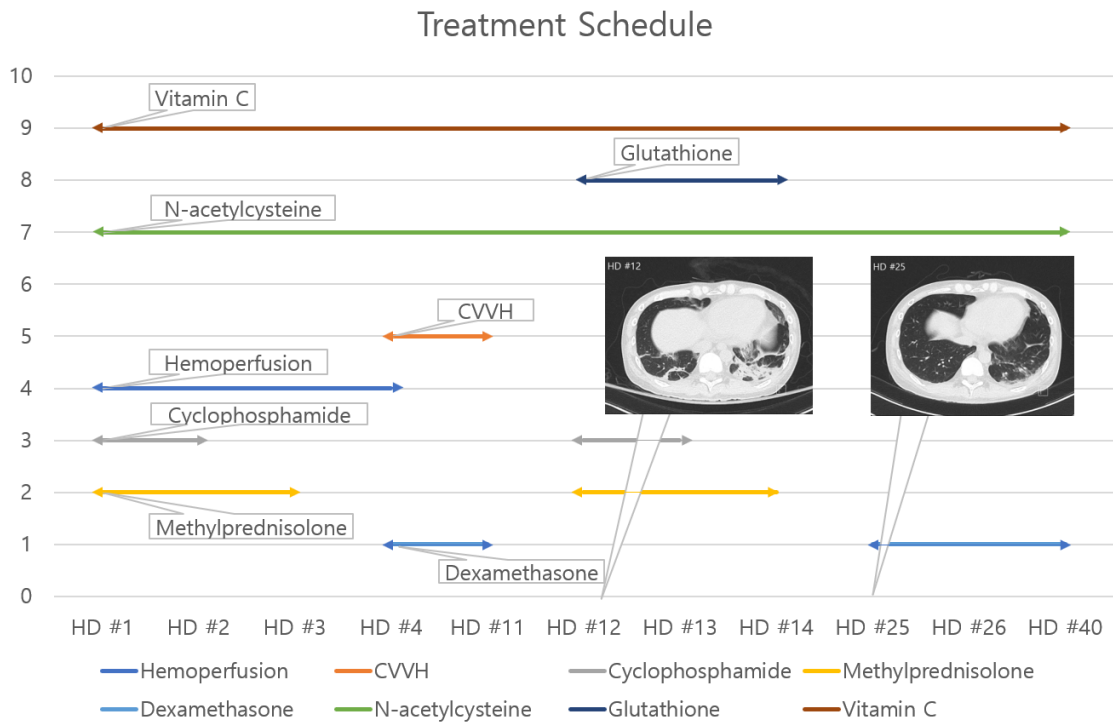


Figure 2. Serum and Urine Gramoxone Level

