

Abstract Type : Poster

Abstract Submission No. : PO-1485

**A Rare Clinical Case Study of Calculus Induced Hydroureteronephrosis
Obstructive Syndrome in a Patient with Two Separate Pelviccalyceal System
in Right Side with Bifid Ureter**

Anil Gautam¹, Bijay Subedi², Janak Awasthi³

¹Department of Department of Research, Research Centre for Applied Science and Technology, Nepal

²Department of Department of Medical Laboratory, Pokhara University, Nepal

³Department of Department of Anatomy, Gandaki Medical College, Nepal

Case Study: Introduction

Renal abnormalities account for high percentage of congenital anomalies due to genetic disorder during gestation. A bifid or duplex ureter is a rare case of congenital kidney anomalies resulting untimely and early division of ureteric diverticulum occurring in 0.88% population.

Hydroureteronephrosis is the dilatation of the kidney and ureter due to partial or complete blockage of ureter due to calculus. Here, we reported a rare clinical entity of hydroureteronephrosis caused by obstruction of calculus in a patient with bifid ureter .

Case Presentation

A male patient of age 38 presented with wide spectrum of manifestations such as pain in right abdomen, renal colic, flank pain, episodes of watery vomiting and non-bilious fever was studied. Blood pressure of 160/130 mmHg with acute hypertension was observed.

Methods and Materials

This present case was diagnosed by the routine radiological procedures i.e. Computed Tomography Intravenous Pyleogram(CT IVP) via intravenous infusion of contrast medium followed by X-ray at specific interval of time correlating with lab findings.

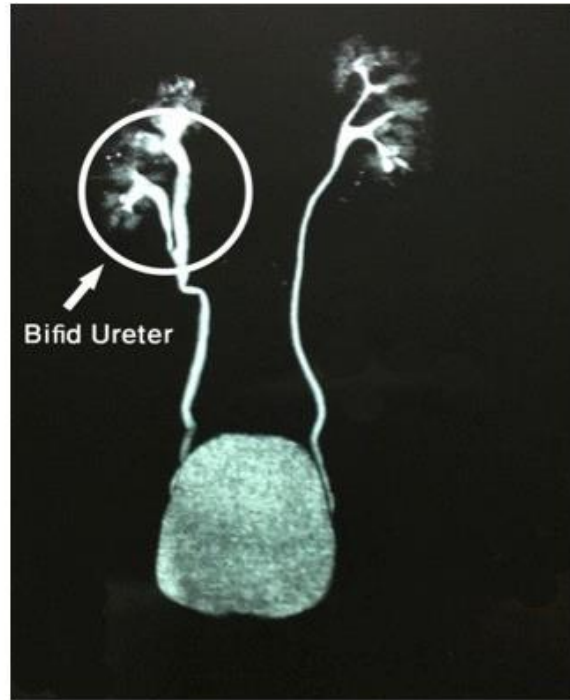
Finding, Discussion and Management

The single large calculus measuring approx. 8.6*9 mm right at the junction of bifid ureter was found which was subjected to extra corporeal shock wave lithotripsy resulting in fragmentation. A temporary stent was placed on the right side as a support. The biochemical assay of renal function test shows no any alternation. However, plenty of Red Blood Cells with Haematuria were found in urine analysis. Literature review suggest no any previous this type of case in Nepalese population. So, this can be said one of the rare clinical case study.

Conclusion:

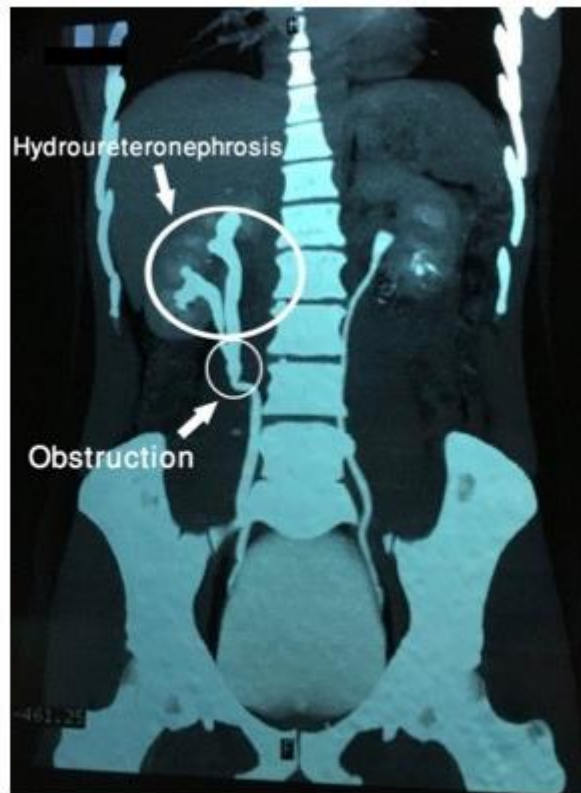
The duplexing of renal system i.e. bifid ureter is of both medical and academic importance. Immediate life savings clinical interventions should be given in cases nephrolithiasis for preventing further damage and failure of renal system.

Intravenous Pyleogram Imaging



Fig(a): Intra Venous Pyleogram Imaging (IVP)

Computed Tomography Coronal View



Fig(b): Computed Tomography Imaging(Coronal View)