

**Abstract Type : Oral**

**Abstract Submission No. : OR-1393**

### **Renal outcome using new chronicity scoring system in IgA nephropathy**

**Donghyuk Kang**<sup>1</sup>, Tae Hyun Ban<sup>2</sup>, Hyung Duk Kim<sup>1</sup>, Hoon Suk Park<sup>2</sup>, Byung Ha Jung<sup>1</sup>, Byung Soo Kim<sup>2</sup>, Cheol Whee Park<sup>1</sup>, Chul Woo Yang<sup>1</sup>, Yong-Soo Kim<sup>1</sup>, Bum Soon Choi<sup>2</sup>

<sup>1</sup>Department of Internal Medicine-Nephrology, The Catholic University of Korea, Seoul St. Mary's Hospital, Korea, Republic of

<sup>2</sup>Department of Internal Medicine-Nephrology, The Catholic University of Korea, Eunpyeong St. Mary's Hospital, Korea, Republic of

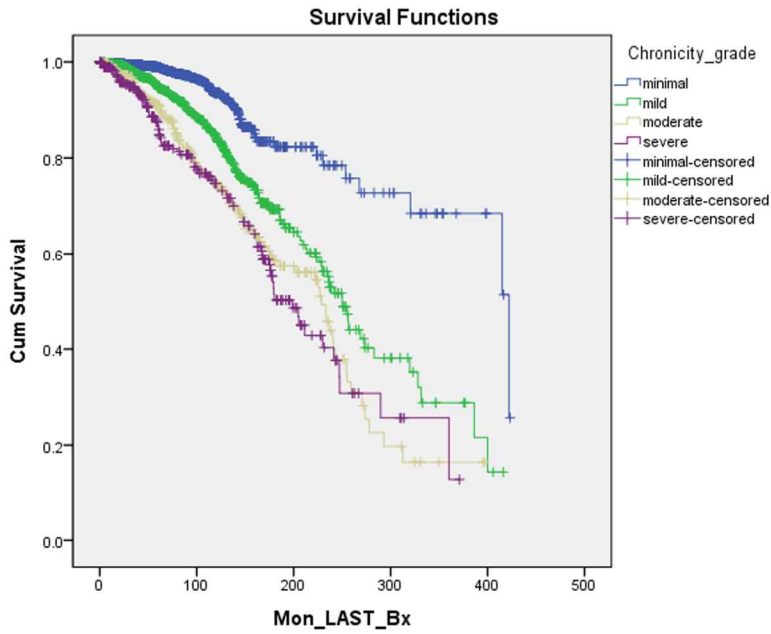
**Objectives:** IgA nephropathy (IgAN), which is a major cause of glomerulonephritis (GN), reaches to end-stage renal disease (ESRD) among 10~50% of patients over 20 years. Since IgAN had a diverse range of clinical presentation from simple microscopic hematuria to rapid progression, predicting renal outcome would be helpful to approach treatment strategy. We evaluated renal outcome as applying a new chronicity scoring system of IgAN, which is consisted of 4 factors including glomerulosclerosis, tubular atrophy, interstitial fibrosis and arteriosclerosis

**Methods:** A total of 7104 IgAN patients diagnosed to IgAN by kidney biopsy from January 1<sup>st</sup>, 1979 to October 10<sup>th</sup>, 2018 were enrolled from Korean GlomeruloNephritis Study Group (KOGNET) registry. The patients were divided into four groups based on grade of chronic scoring system analysis (minimal: 0-1, mild: 2-4, moderate: 5-7, severe: 8-10). Primary outcome was a period for doubling of serum creatinine level, Secondary outcome was renal survival through a progression to ESRD. Renal outcome was assessed based on grade of chronicity scoring via Kaplan-Meier.

**Results:** For doubling of serum creatinine level, the minimal and the mild groups showed greater renal outcomes than the moderate and the severe groups ( $P < 0.001$  for all and  $P < 0.001$  for all, respectively). However, there were no significant difference of renal outcome between moderate group and severe group ( $P = 0.51$ ). The renal survival from ESRD represented that the minimal group had greatest renal survival than mild, moderate and severe group ( $P < 0.001$  for all), and mild group had better renal survival than moderate and severe group ( $P < 0.001$ ,  $P < 0.001$ , respectively).

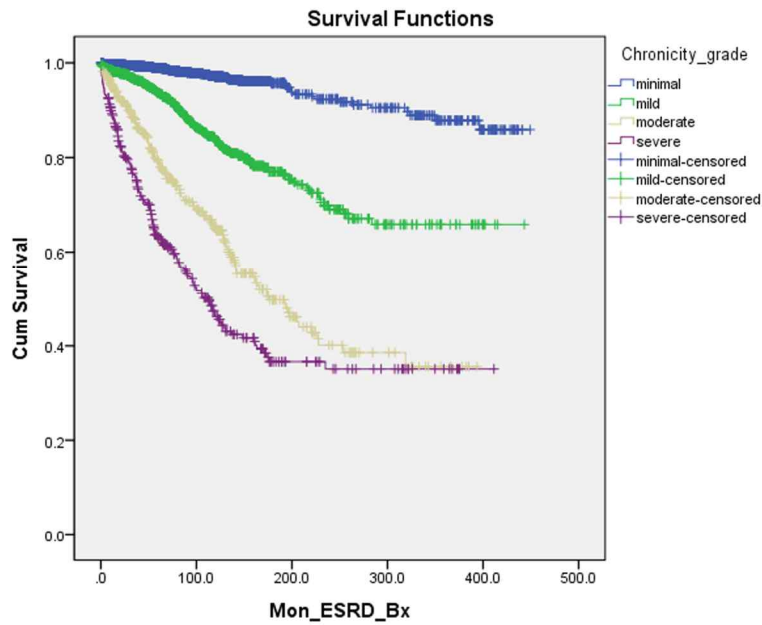
**Conclusions:** In the IgAN patients with lower score based on chronicity scoring system showed slow progression to ESRD compared to those with advanced chronicity.

Figure1 : chronicity with renal outcome(Cr)



< Figure 1: Kaplan-Meier curve - chronicity grade with renal outcome (Months from diagnosis to Cr doubling) >

Figure2: chronicity with renal outcome(ESRD)



< Figure 2: Kaplan-Meier curve - chronicity grade with renal outcome (Months from diagnosis to ESRD) >