

**Abstract Type : Poster**

**Abstract Submission No. : PO-1497**

**A case of Acute kidney injury after dapagliflozin administration in diabetic patient with Acute Cerebral infarction**

**Soonseok Hwang**<sup>1</sup>, Eun kyong Lee<sup>1</sup>, Changhyun Park<sup>1</sup>, Won Yong Suh<sup>2</sup>, Do Hyun Lee<sup>3</sup>

<sup>1</sup>Department of Internal Medicine-Nephrology, Dankook University Hospital, Korea, Republic of

<sup>2</sup>Department of Internal Medicine-Nephrology, Cheonan Medical Center, Korea, Republic of

<sup>3</sup>Department of Internal Medicine-Nephrology, Baek-jae General Hospital, Korea, Republic of

**Case Study:** Dapagliflozin, recently developed SGLT2 inhibitor as an oral anti-diabetic drug, is well known for cardioprotective and renoprotective effect. Although the reduction of glomerular filtration rate is induced by volume depletion and tubule-glomerular feedback in the early period during administration of SGLT2 inhibitor, the prognosis of renal outcome is more improved by the decrease of proteinuria. However, the risk of acute kidney injury is increased in the patients with heart failure, hypovolemia or the administration of specific drugs such as non-steroidal anti-inflammatory drug, angiotensin converting enzyme inhibitor/angiotensin II receptor blocker or diuretics. We report a case of acute kidney injury after dapagliflozin administration in diabetic patient with acute cerebral infarction accompanied by right hemiplegia, motor aphasia and dysphagia.

Figure 1. brain MRI

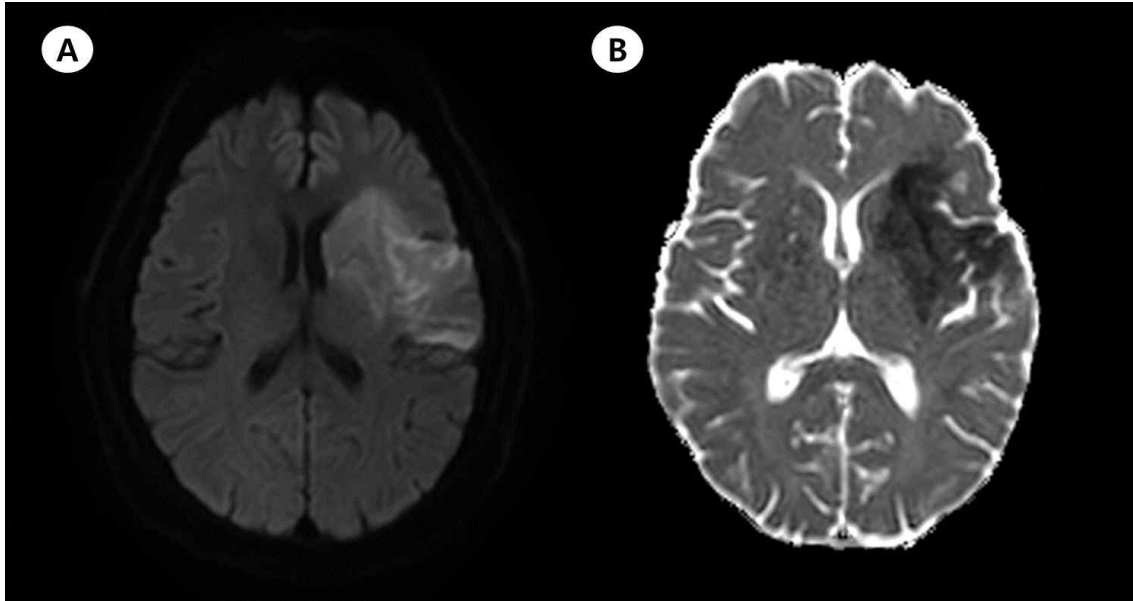


Figure 2. Clinical course

